

## Your ADSL USB Modem Setup Guide

Follow our exclusive guide below to get your new modem installed quickly and easily. This guide is based upon the Windows 98 operating system but most versions of Windows will be similar to set-up. For other operating systems, please refer to the manual provided on the included CD.

**1** Install the software before connecting your modem  
Before connecting your ADSL modem to your PC's USB port insert the installation CD into your CD drive (this CD is included with the modem). The installation will start automatically<sup>1</sup>. Click "Install" in the window that appears and the following window will be displayed:

<sup>1</sup> If the wizard does not automatically start, find and double-click the file setup.exe on the included CD.

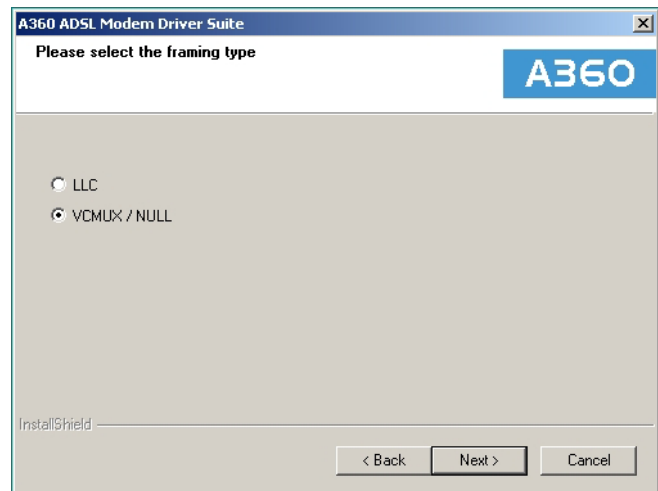
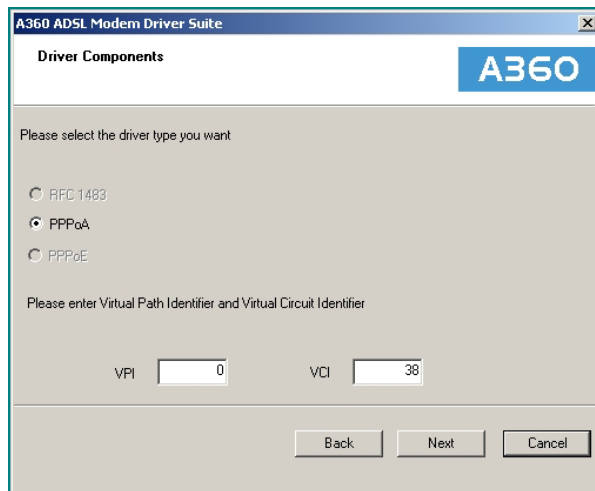
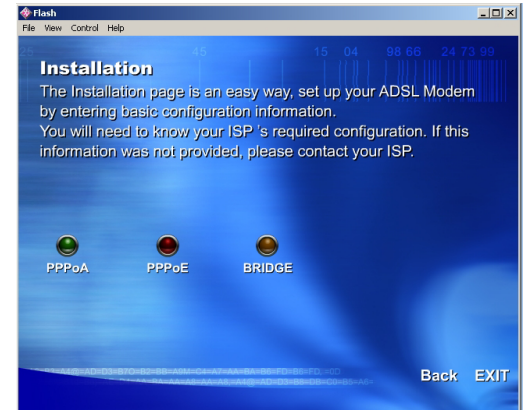
**2** Select **PPPoA** from the options shown to begin the installation.

**3** In the A360 ADSL Modem Driver Suite dialogue click **Next**, then read through the licence agreement and click **Yes**.

**4** The **Driver Components** window should show that you have selected PPPoA. If not, click **Back** and choose **PPPoA** from the options shown. Enter the **VPI as 0** and the **VCI as 38**. Click **Next** to confirm.

- **Windows 98/ME** - You will be prompted to connect the USB modem during the installation process and you may also need your Windows installation CD.

- **Windows 2000/XP** - The modem should not be plugged into your computer until after the installation process has been completed.



**5** In the **Please select the framing type** window select your **VCMUX / NULL**. Click **Next** to confirm and then click Finish in the next window. You should be asked to reboot your machine.

- **Windows 2000/XP** - if you are prompted at all during this installation please click "Continue Anyway". You should not plug the modem into your machine until after the computer has rebooted.

**6** An icon named **Shortcut to Wip Tech** will be created on your Windows Desktop area. Open your ADSL Connection by double-clicking this icon.

**7** Enter your ADSL username in the window that appears. Your ADSL username will be sent to you by e-mail once your ADSL account is activated, and is different to the username chosen during the signup process. In the **Password** box enter the password you chose when signing up for your ADSL account and click Dial (or Connect). Congratulations, you're now connected to ADSL!

**Turn over for your handy troubleshooting guide**