

3COM OfficeConnect ADSL Router – Quickstart Guide

Setting up your router with a single IP address with Network Address Translation (NAT) for IP sharing.

This guide should be used in conjunction with the included manual you will have received with your equipment. The guide refers to installation CD software and is based upon a Windows 2000 operating system; most versions of Windows will be similar. For other operating systems you should configure your PC manually rather than running the installation software included.

- 1 Connect the router to a telephone line splitter using the telephone connection lead (supplied). Connect your router to the mains power supply using the supplied power adaptor and turn the router on. Next, connect your PC to the router using either a **standard** (straight-through) or **crossover** Ethernet cable (not supplied).

Please note there is a button on the rear of the router labelled PC/Hub; this should be set 'out' or pushed 'in' depending on your Network configuration:

- Set Out: Link your router directly to a hub with a straight-through cable
- Pushed In: Connect your router to a single PC (simulating a crossover).

- 2 Check that the Router's LAN light is now illuminated green (if it isn't check the PC/Hub button is set correctly). Insert the Installation CD to begin the Router Setup program.

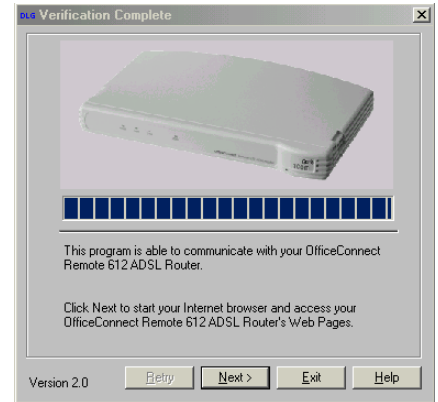
- 3 Select **Install** from the options available and click **Next** to confirm.



- 4 The Installation software will test your PC's connection to the Router and confirm that you have correctly plugged in the cables. You will be prompted to restart your PC at this point.

- 5 After the computer has been restarted, you will be presented with a screen to test your connection to the router. Click **Next** to start this Verification process. When the PC has successfully communicated with your router, click **Next** to continue.

- 6 The Setup program will open the Router's Web Page setup area in a new Internet browser, by connecting to the IP address of your router (gateway) <http://192.168.200.254/>



- For non-Windows Networking - Type <http://192.168.200.254/> into your browser's address field manually).

- 7 When first connecting to the router, you will be asked to enter a Username. This secures access to your Router's interface from unwanted access. Enter **Admin** as the username and leave the password box blank. Click **OK** to confirm. You will be shown a number of configuration where you are prompted to set up your Internet connection information. This will have been provided to you during your signup process.

- 8 You will need the following technical settings to connect with ADSL in the UK:

Service Type - PPP over ATM (PPPoA-VC MUX)

VPI - 0 (VPI 0)

VCI - 38 (VCI 38)

Your Internet Login should set to the username and password sent to your contact e-mail address after your ADSL account was activated. Your ADSL username will be sent to you by e-mail once your ADSL account is activated, and is different to the username chosen during the signup process. In the **Password** box enter the password you chose when signing up for your ADSL account. Click on **Next** to confirm. When the screen shows both the **ADSL Line** and the **Internet Connection** are **Up**, you are ready to connect to the Internet using the router.

- 9 Congratulations, your Router Starter Pack is now connected to your new Broadband account.

- For information and advice about setting up an ADSL router to connect as 'No-NAT' (using multiple public IP's), please refer to the *Technical Support* section of our website. Should you have difficulty installing your router, please refer to the *Troubleshooting Guide* included on the CD.

- To configure your router to support multiple users on a Local Area Network (LAN) please refer to the manual included on the Installation CD. This is in HTML format and you should be able to refer to this regardless of your operating system. (The location on the CD is (CD Drive letter):\Docs\English\INDEX.HTM)

OfficeConnect® Remote 612 ADSL Router

Internet Connection

Enter the required information from your Internet Service Provider (ISP). Note that some selections will cause the page to redisplay with additional fields. Click the Next button when finished.

Internet Service

Service Type:

VPI: VCI:

Internet Login

User Name:

Password: (enter twice)

This guide is provided in addition to the official documents provide by your router manufacturer. PlusNet Technologies Ltd accept no responsibility for any problems you may experience as a result of following this guide.

Turn over for your handy troubleshooting guide